

## DIRECTIONS - UK

### From the M4 Junction 15

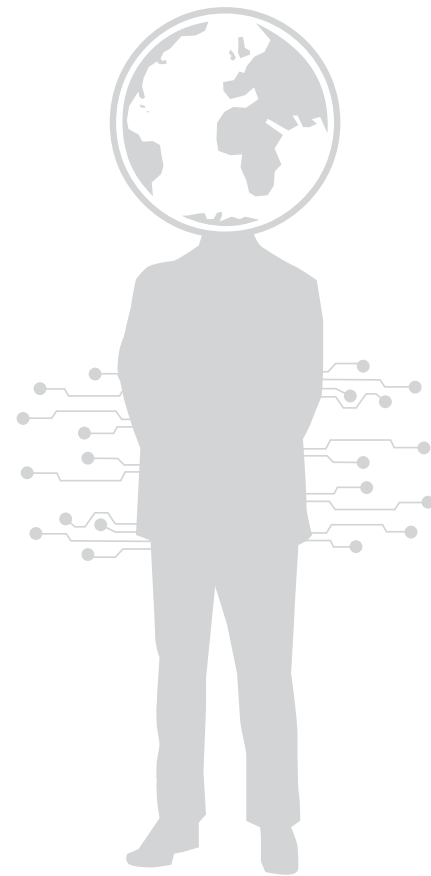
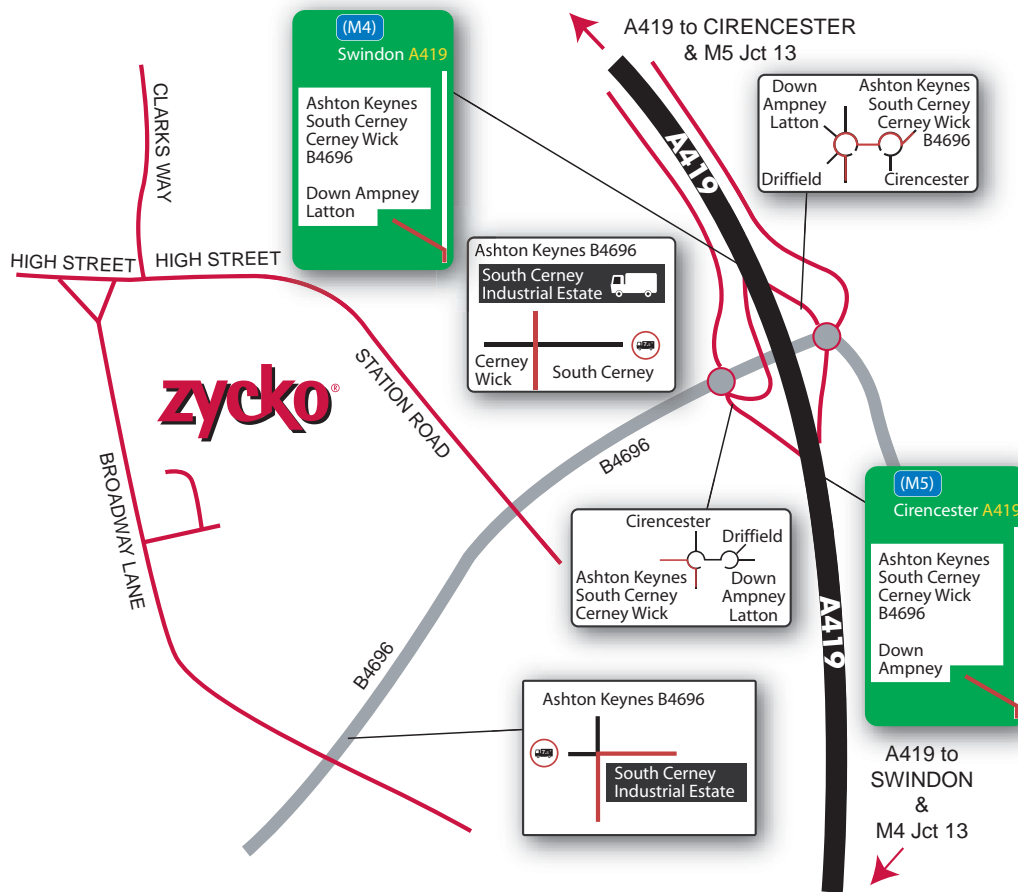
From the M4 Junction 15 take a right hand turn onto the A419 signed for Cirencester, continue on the A419 for about 20 minutes. Exit the A419 at the Spine Road Junction towards South Cerney and Ashton Keynes. You will also notice a brown 'Heritage Sign' for the 'Cotswold Water Park'. After approximately a mile and a half take the second right turn into Broadway Lane; signed for 'South Cerney Industrial estate'. Zycko is approx 1 mile on the right.

### From the M5 South Junction 13

From the M5 Junction 13 take a left hand turn onto the A419 signed for Cirencester. Follow the A419 (turning right at the round-a-bout at the top of the hill) for about 20 minutes and turn right at the Spine Road (B4696) Junction. You will also notice a brown 'Heritage Sign' for 'The Cotswold Water Park'. After approximately a mile and a half take the second right turn into Broadway Lane; signed for 'South Cerney Industrial estate'. Zycko is the first building on the left hand side.

### From the M5 North Junction 11A

Take a left turn onto the A417 signed for Cirencester. Stay on the A417 passing through Cirencester then joining the A419 turn right at the Spine Road (B4696) Junction. Continue as from M5 South.



Zycko Ltd. The Mallards | Broadway Lane | South Cerney | Cirencester GL7 5TQ | United Kingdom

Tel: +44 (0)1285 868500

Fax: +44 (0)1285 868501

Web: [www.zycko.com](http://www.zycko.com)